

Name _____

1. Malak has these coins.
How much money does he have? If he spends a dime and a nickel, how much money will he have? **1 point**
Count on to find the total.

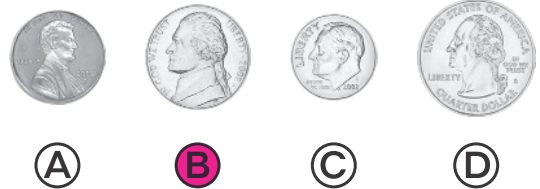


He has **51** cents.

He will have **36** cents.

2. Steven has 5 coins. The total value is 66¢. He has 2 quarters, 1 dime, and 1 penny.

Which shows his fifth coin? **1 point**



3. Ann has 37¢.
Which coins could she have? **1 point**



4. Sonia has quarters, dimes, and nickels. Show all the ways she can make 30¢. Use tally marks.

Circle the way that uses the greatest number of coins.

2 points
Sample order shown.

Ways to Show 30¢			
Quarter	Dime	Nickel	Total
I		I	30¢
	III		30¢
	II	II	30¢
	I	IIII	30¢
		IIII I	30¢

5. Mr. Chang has the dollar bills shown below. How many dollars does Mr. Chang have? If he spends \$12 on lunch and does not receive any change, which bills could he have used to pay for it? **2 points**



\$23; Sample answer: two \$1 bills, and one \$10 bill

6. **A.** Tyra has three \$20 bills, three \$5 bills, and one \$1 bill. Joe has a \$100 bill. How much more money does Joe have? Explain. **2 points**

\$24; Sample answer:
 $20 + 20 + 20 + 5 + 5 + 5 + 1 = 76$;
Tyra has \$76.
 $100 - 76 = 24$

B. What bills can you use to show how much more money Joe has? **1 point**

Sample answer: one \$10 bill, two \$5 bills, and four \$1 bills

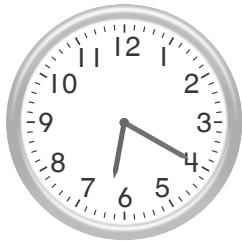
7. Marcus has saved \$40. Show three different ways to make \$40. Use tally marks in the table at the right.

Circle the way that uses the least number of bills. **2 points**

Ways to Show \$40			
\$20 Bill	\$10 Bill	\$5 Bill	Total
			\$40
			\$40
			\$40

Sample answer given.

8. Alicia eats dinner at the time shown on the clock.



What time does Alicia eat dinner? **1 point**

- (A) 6:20 a.m.
- (B) 7:20 a.m.
- (C) 6:20 p.m.
- (D) 7:20 p.m.

9. Mike's father starts work at the time shown on the clock.



Is this the time he starts work? Choose Yes or No.

1 point

- half past 8 Yes No
- quarter to 9 Yes No
- 30 minutes after 8 Yes No
- 30 minutes before 9 Yes No

10. The clock shows the time Meg arrives at soccer practice. What time does the clock show? Choose all that apply. **1 point**



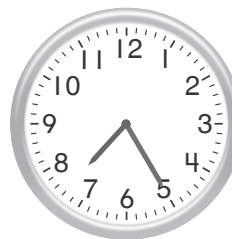
- half past 3
- quarter to 4
- 45 minutes after 3
- 15 minutes to 4
- quarter past 4

11. The first clock shows the time Ray wakes up in the morning.

Write the same time on the second clock.

Then circle a.m. or p.m.

2 points



a.m.

p.m.

12. Look at the time on the first clock. Write that time on the second clock. **1 point**



13. Circle a.m. or p.m. to tell when you would do each activity. **1 point**

Do homework after school. a.m. **p.m.**

Get dressed to go to school. **a.m.** p.m.

Watch the sunrise. **a.m.** p.m.

Eat dinner at 6:15. a.m. **p.m.**

14. Draw lines to match the time on each clock in the first row to the same time shown in the second row. **1 point**

