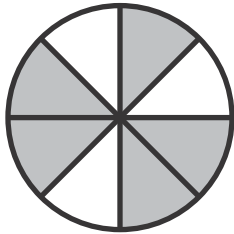


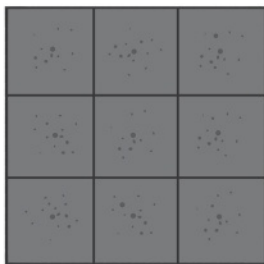
Name _____

1. What fraction of the whole is shaded?
What fraction of the whole is **NOT** shaded? **2 points**



$\frac{5}{8}$ is shaded. $\frac{3}{8}$ is not shaded.

2. Write a fraction to name the equal parts of the whole casserole. How many parts would you need to make two whole casseroles? Explain. **2 points**



Sample answer: The whole casserole is $\frac{9}{9}$. One whole casserole has 9 parts, so two whole casseroles would have 18 parts.

3. This line segment represents $\frac{1}{4}$ of the length of Jo's desk. Which represents the whole length and has an accurate explanation? **1 point**



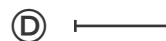
The line segment represents $\frac{1}{4}$ the distance of Jo's desk. So, the whole distance is 3 times as long.



The line segment represents $\frac{1}{4}$ the distance of Jo's desk. So, the whole distance is 2 times as long.

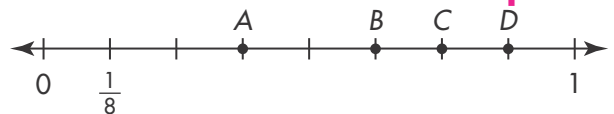


The line segment represents $\frac{1}{4}$ the distance of Jo's desk. So, the whole distance is 4 times as long.



The line segment represents the length of Jo's desk. So, the whole distance is identical to the line segment.

4. Which point is $\frac{6}{8}$ on the number line? **1 point**



(A) Point A

(C) Point C

(B) Point B

(D) Point D

5. Which of the fractions would be to the left of 1 on a number line? Select all that apply. **1 point**

$\frac{5}{3}$

$\frac{2}{7}$

$\frac{3}{5}$

$\frac{4}{1}$

$\frac{3}{3}$

6. A. Draw a figure to show $\frac{3}{5}$. **1 point**



Sample picture shown.

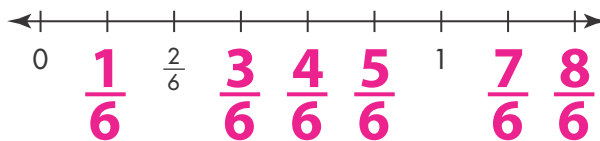
- B. Explain how you knew you had shaded the correct parts of your picture. **1 point**

Sample answer: I know I shaded the correct amount because each of the 5 parts is $\frac{1}{5}$ of the whole, and I shaded three of them. Three copies of $\frac{1}{5}$ is $\frac{3}{5}$.

7. In Emily's bead collection, $\frac{1}{2}$ of her beads are red and $\frac{1}{4}$ of her beads are green. What fraction of her beads are **NOT** red? What fraction of her beads are **NOT** green? **2 points**

$\frac{1}{2}$ of her beads are not red. $\frac{3}{4}$ of her beads are not green.

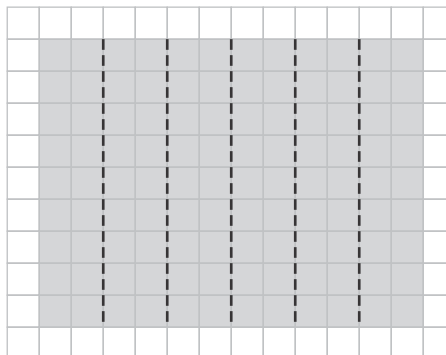
8. One point on the number line has been marked with the fraction $\frac{2}{6}$. Write a fraction for each of the other points shown. **1 point**



9. Explain how you know $\frac{7}{7}$ represents a whole. **1 point**

Sample answer: The numerator and the denominator are the same.

10. Marina folded a piece of paper that is 9 inches by 12 inches into sections as shown below. What fraction of the total area is each section? Explain. **2 points**



$\frac{1}{6}$; Sample answer: There are six parts of equal area in all, so each part would be $\frac{1}{6}$.

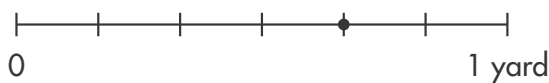
11. How many $\frac{1}{3}$ s are in $\frac{5}{3}$? **1 point**

5

12. Mr. Roberts is building a fence with 5 equal parts. He spent 90 minutes working on each of 2 days. On the first day, he built $\frac{1}{5}$ of the fence. The second day, he built another $\frac{2}{5}$ of the fence. How many $\frac{1}{5}$ -parts did he build in the first two days? **1 point**

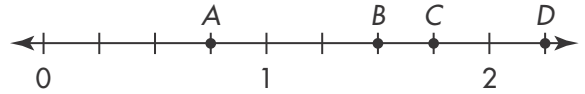
- (A) 1
- (B) 2
- (C) 3
- (D) 4

13. How many $\frac{1}{6}$ s do you need to get $\frac{4}{6}$? Use the number line below for help. **1 point**



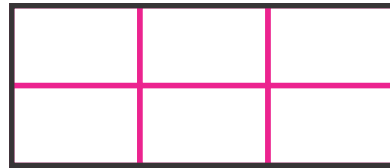
- (A) 1
- (B) 3
- (C) 4
- (D) 6

14. Which point represents 6 lengths of $\frac{1}{4}$ on the number line? Explain. **2 points**



Point B; Sample answer: The distance from 0 to 1 is divided into 4 equal parts, so each part is $\frac{1}{4}$. There are 6 parts between point B and 0.

15. Divide the rectangle into 6 equal parts. What fraction does each part represent? **2 points**



Sample drawing shown; Each part is $\frac{1}{6}$.

16. Pauline drew $\frac{2}{6}$ of a shape below. Draw a picture to show the whole shape and write a fraction to represent the whole. **2 points**



The whole is $\frac{6}{6}$.

17. Li believes that $\frac{3}{4}$ of the figure is shaded. Is he correct? Explain. **2 points**



No; Sample answer: The figure is not divided into 4 equal parts.

18. Select all the sentences that describe this shape. **1 point**



- $\frac{4}{8}$ of the shape is shaded.
- $\frac{5}{9}$ of the shape is shaded.
- $\frac{9}{9}$ represents the whole.
- $\frac{4}{9}$ of the shape is unshaded.
- $\frac{5}{8}$ of the shape is unshaded.

19. Divide the number line into equal lengths. Then mark and label the given fraction. **2 points**

8 equal lengths; $\frac{3}{8}$



20. Mary has a box of colored chalk. The table shows the lengths of some of the pieces of chalk.

Lengths of Chalk

Chalk Color	Length (nearest half inch)
Yellow Chalk	3 in.
Blue Chalk	$3\frac{1}{2}$ in.
Red Chalk	$2\frac{1}{2}$ in.
Orange Chalk	3 in.
Green Chalk	$3\frac{1}{2}$ in.
Purple Chalk	4 in.

- A. Measure the lengths of Mary's gray and white pieces of chalk shown below to the nearest half inch. **2 points**



$2\frac{1}{2}$ inches



2 inches

- B. Draw a line plot to show the lengths of all the pieces of chalk to the nearest half inch. **1 point**

Lengths of Chalk

