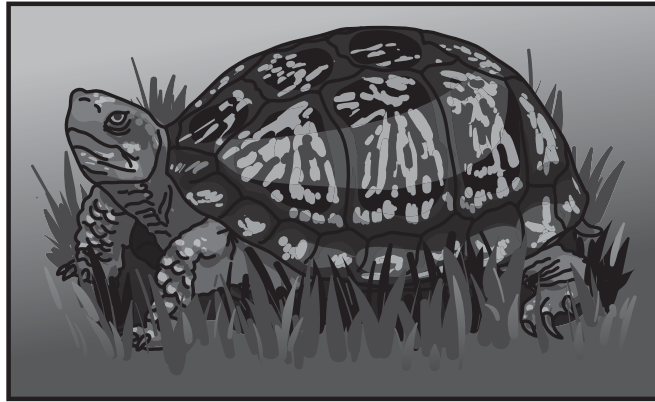


Name \_\_\_\_\_

# Listening

## All About Box Turtles

### A Turtle's Shell



A box turtle's shell  
is part of its body.

3

Name \_\_\_\_\_



What They Eat

Where They Live

Don't Touch



A Turtle's Shell

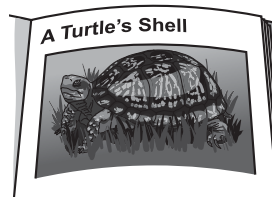
All About Box Turtles



A box turtle's shell  
is part of its body.



**Table of contents**  
A Turtle's Shell . . . . . 4  
What They Eat . . . . . 6  
Where They Live . . . . . 8



**Glossary**  
**Woodlands:** Land covered  
with trees.

Name \_\_\_\_\_

# Foundational Skills



he

she

be

---



ten

man

to

---



can

had

has

---



bin

fin

win

---

Name \_\_\_\_\_



wag

bag

sag

---



cab

dab

jab

---



ham

jam

ram

---

# Specific Guidelines for Administering the Weekly Assessments

## Module 4, Week 4 Assessment

### Listening

**Say:** Look at the picture as you listen to a text called “All About Box Turtles.” It talks about what box turtles look like, what they eat, and where they live. Look at the picture. It shows the first page from the text you will listen to. It has a heading. The heading is “A Turtle’s Shell.” After listening to the text, you will answer some questions.

### **All About Box Turtles**

#### **A Turtle’s Shell**

A box turtle’s shell is part of its body. It keeps the box turtle safe from bigger animals that are hunting for something to eat. When a box turtle gets scared—SNAP!—its shell closes up tight. A box turtle doesn’t have to run away like other animals. Instead, its head, tail, and legs all fit inside its shell, so nothing can hurt it. Its shell also helps to keep it from getting too hot or too cold. A shell is a useful thing to have, don’t you think?

Box turtles eat plants. They like berries, green leaves, and flowers. They will also eat anything else they can catch, such as bugs and snails.

Box turtles live in woodlands and grasslands. Some even live in deserts. Throughout their lives, they like to stay close to home. They don’t usually go far from the place where they were born.

Box turtles are nice and will not hurt you. Many people like to keep them as pets. But if you see a box turtle outside, it’s best not to touch it. It can get lost if you move it. They also get scared when people pick them up. It’s more fun to

watch them when they are out of their shells and moving around.

If you ever see a box turtle, watch what it does. What does it eat? Where does it go?

**Item 1: Say:** Move to the apple. Listen to this sentence. They don’t usually go far from the place where they were born. Under what heading would you MOST LIKELY find this detail?

What They Eat

Where They Live

Don’t Touch

**Item 2: Say:** Move to the bird. Which text feature gives the most details about the turtle?

the heading, A Turtle’s Shell

the title of the text, All About Box Turtles

the sentence under the picture, A box turtle’s shell is part of its body.

**Item 3: Say:** Move to the car. Where would you look if you wanted to find the part of the text that talks about what box turtles eat?

in the table of contents

under the first heading

in the glossary

## Foundational Skills

**Item 1: Say:** Move to the apple. Choose the word be.

**Item 2: Say:** Move to the bird. Choose the word ten.

**Item 3: Say:** Move to the car. Choose the word had.

**Item 4: Say:** Move to the chair. Choose the word win.

**Item 5: Say:** Move to the fish. Choose the word wag.

**Item 6: Say:** Move to the flower. Choose the word jab.

**Item 7: Say:** Move to the hand. Choose the word jam.

